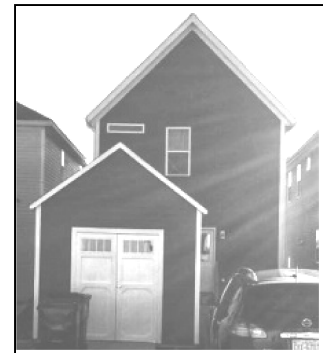




5/13/2020



Alpine 9/12 pitch  
Higher pitch to match home  
(shown with optional transom doors)

**The Area's Storage Building Contractor**

**Your neighbor, Your builder**

**ALPINE SHED (9/12 roof pitch)**

9/12 Pitch roof for dressier look to match your home  
Includes fully treated floor system, 4-6" eaves, 25 yr shingles on felt, built on site, double shed doors, diamond metal threshold, 2 gable vents

7 Foot Wall			8 Foot Wall		
Size (W, L, Peak)	Vertical SmartSide wood panel	Horizontal Vinyl, Fiber Cement, Wood Lap	Size (W, L, Peak)	Vertical SmartSide wood panel	Horizontal Vinyl, Fiber Cement, Wood Lap
8X8X10	\$2,075	\$2,740	10X12X11'9"	\$3,405	\$4,530
8X10X10	\$2,370	\$3,165	10X14X11'9"	\$3,785	\$5,035
8X12X10	\$2,705	\$3,605	10X16X11'9"	\$4,220	\$5,615
10X10X10'9"	\$2,860	\$3,855	10X20X11'9"	\$5,010	\$6,665
10X12X10'9"	\$3,205	\$4,280	12X12X12'6"	\$4,025	\$5,355
10X14X10'9"	\$3,585	\$4,790	12X14X12'6"	\$4,465	\$5,940
10X16X10'9"	\$3,970	\$5,305	12X16X12'6"	\$4,905	\$6,525
10X20X10'9"	\$4,810	\$6,115	12X20X12'6"	\$5,920	\$7,875
12X12X11'6"	\$3,775	\$5,100	12X24X12'6"	\$7,090	\$9,430
12X16X11'6"	\$4,655	\$6,230	16X16X14	\$7,350	\$9,775
12X20X11'6"	\$5,670	\$7,670	16X20X14	\$7,620	\$10,135
12X24X11'6"	\$6,840	\$9,220	16X24X14	\$8,605	\$11,445
16X20X13	\$7,320	\$9,810			
16X24X13	\$8,305	\$11,140			

We start with the basic shed. Choosing from many options, you make it uniquely yours.

Dimensions are Width x Length, x Peak Height

\*Horizontal: Vinyl (Mastic Standard), Cement or Wood Horizontal Lap Siding. All with house wrap, and ridge vent. Metal wrapped eaves available. Special orders may incur an additional charge.

Built in your yard pricing! Price based on getting materials within 50' of building site, and 30 miles from office.

**SUPERIOR QUALITY AND FAIR PRICING!**

**EZ ON-LINE FINANCING AVAILABLE**

**(Including 0% credit cards)**



**Did you know that you can have a 10 x 12 shed for as low as \$130 month?**

**Your community chooses BAS Buildings.....Read our reviews**

**3800 Centurion Drive, #109 – Garner, NC 27529 - (984) 269-7443 <http://www.basbuildings.com>  
Display models open daily. Extended office hours available upon request.**